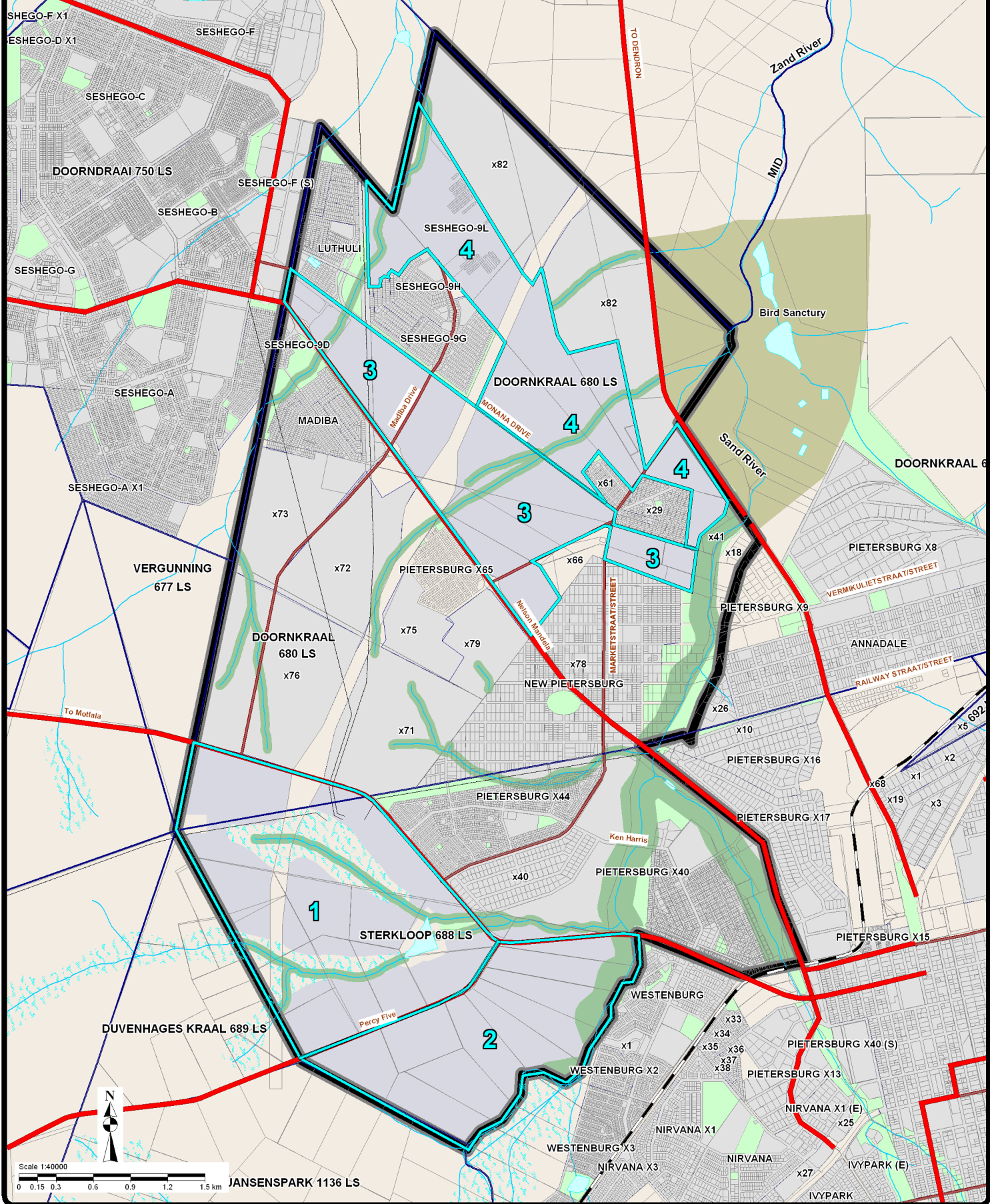


POLOKWANE LOCAL MUNICIPALITY (SDA 1) LAND USE AND SPATIAL STRUCTURE

- | | | |
|---|---------------------|----------------------------|
| □ SDA 1 | ● Filling Station | ■ Bird Sanctuary |
| ■ Residential | ■ Reservoir | ■ Park / Public Open Space |
| ■ Existing Townships (SDA 1) | ■ Sewer | ■ Rivers & Buffers |
| ■ Townships Approved (Under Construction) | ■ Industrial | ■ SAR |
| ■ Business | ■ Special | ■ Agriculture |
| ■ Educational | ■ Municipal | ■ Main Roads |
| ■ Institutional | ■ Government | ■ Railway |
| ■ Hospital | ■ Bull Frog Habitat | |
| ▲ Bus / Taxi Terminus | | |

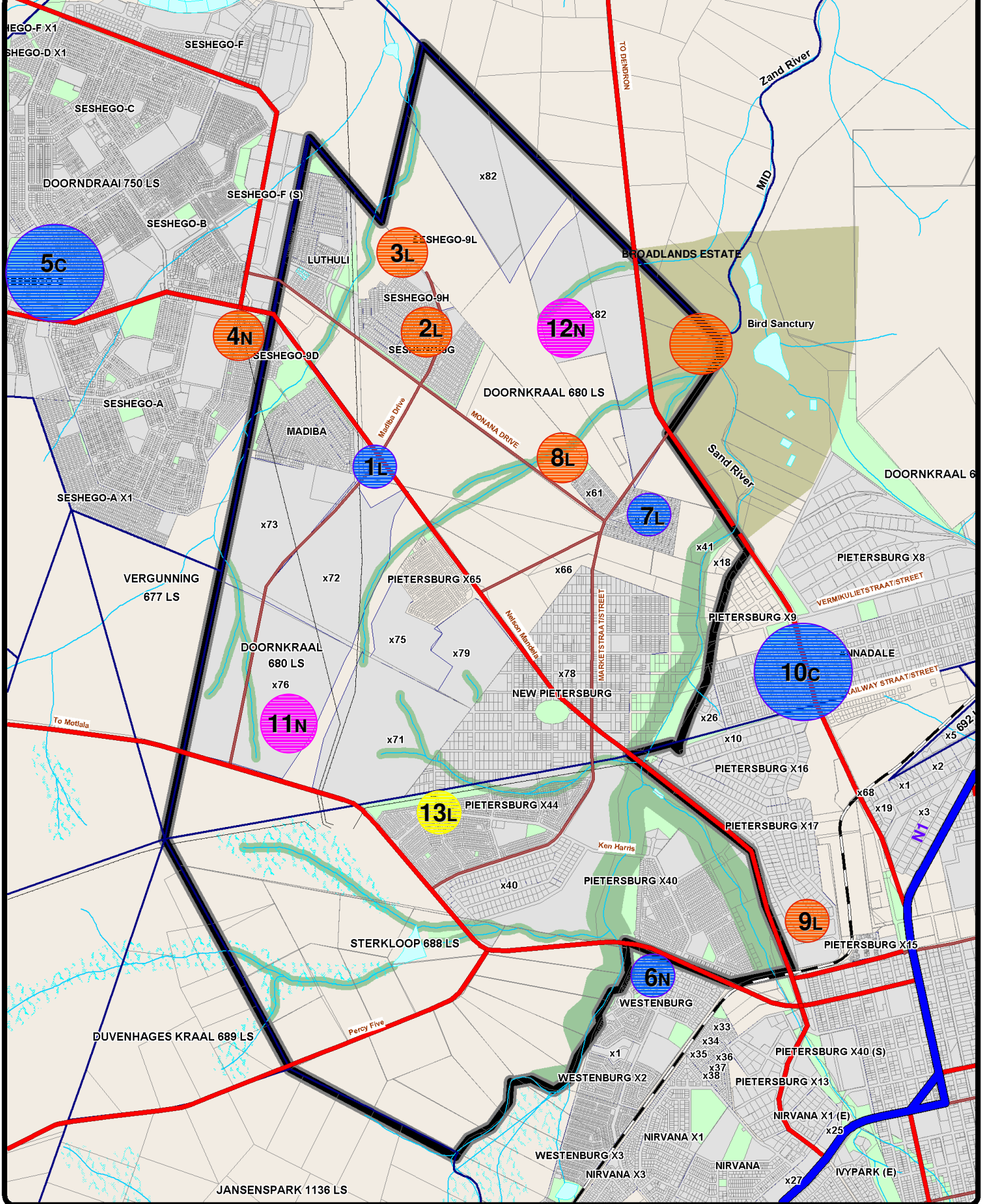




POLOKWANE LOCAL MUNICIPALITY (SDA 1) DEVELOPABLE AREAS

- SDA 1
- Developable Areas
- Rivers & Buffers
- Main Roads
- Precincts

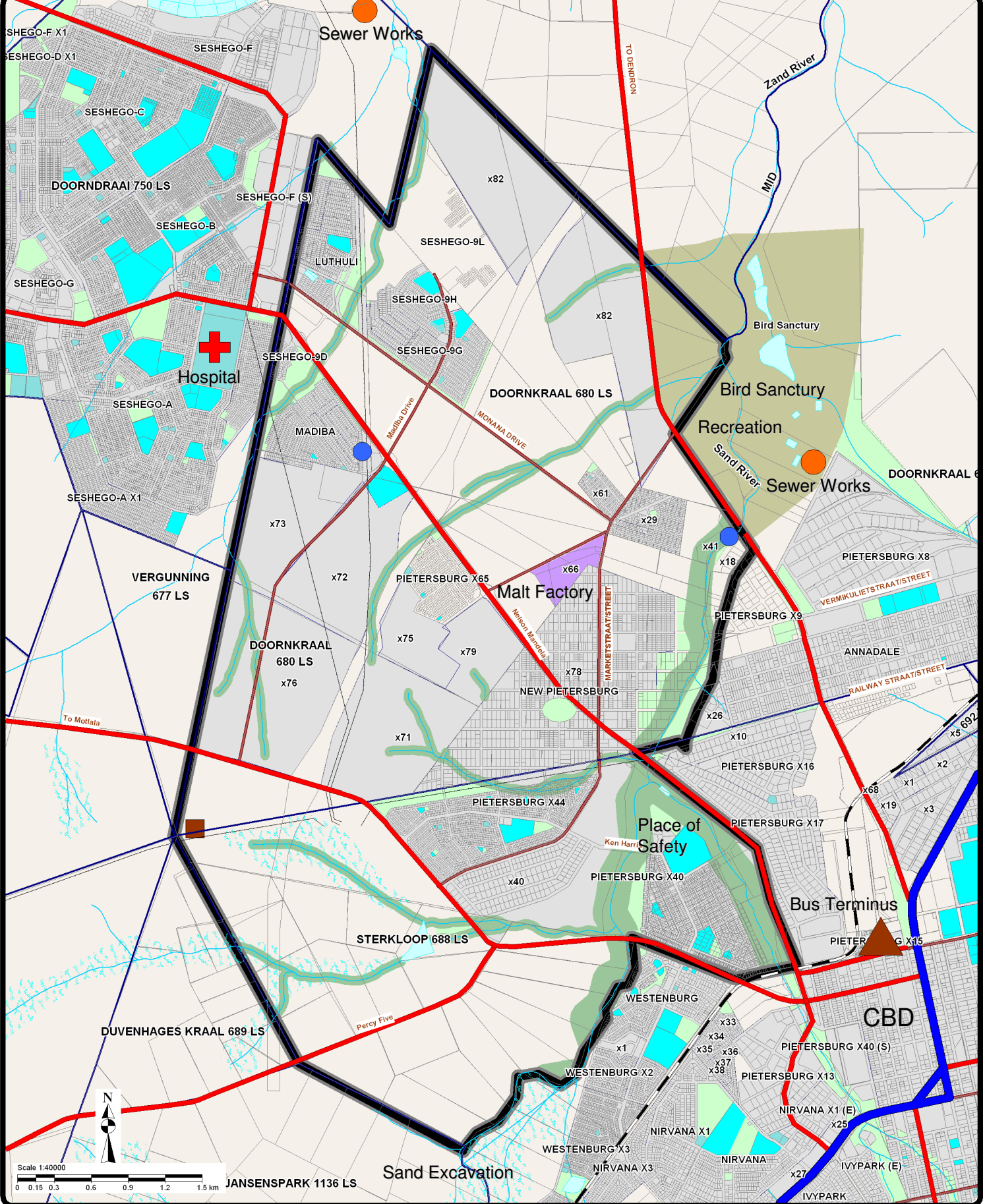




POLOKWANE LOCAL MUNICIPALITY (SDA 1) SHOPPING CENTERS / FACILITIES

- SDA 1
- Bird Sanctuary
- Parks / Open Space
- Existing Shopping Centres
- Approved Shopping Centres (Not Developed)
- Proposed Shopping Centres
- Specialized
- R** Regional
- N** Neighbourhood
- L** Local

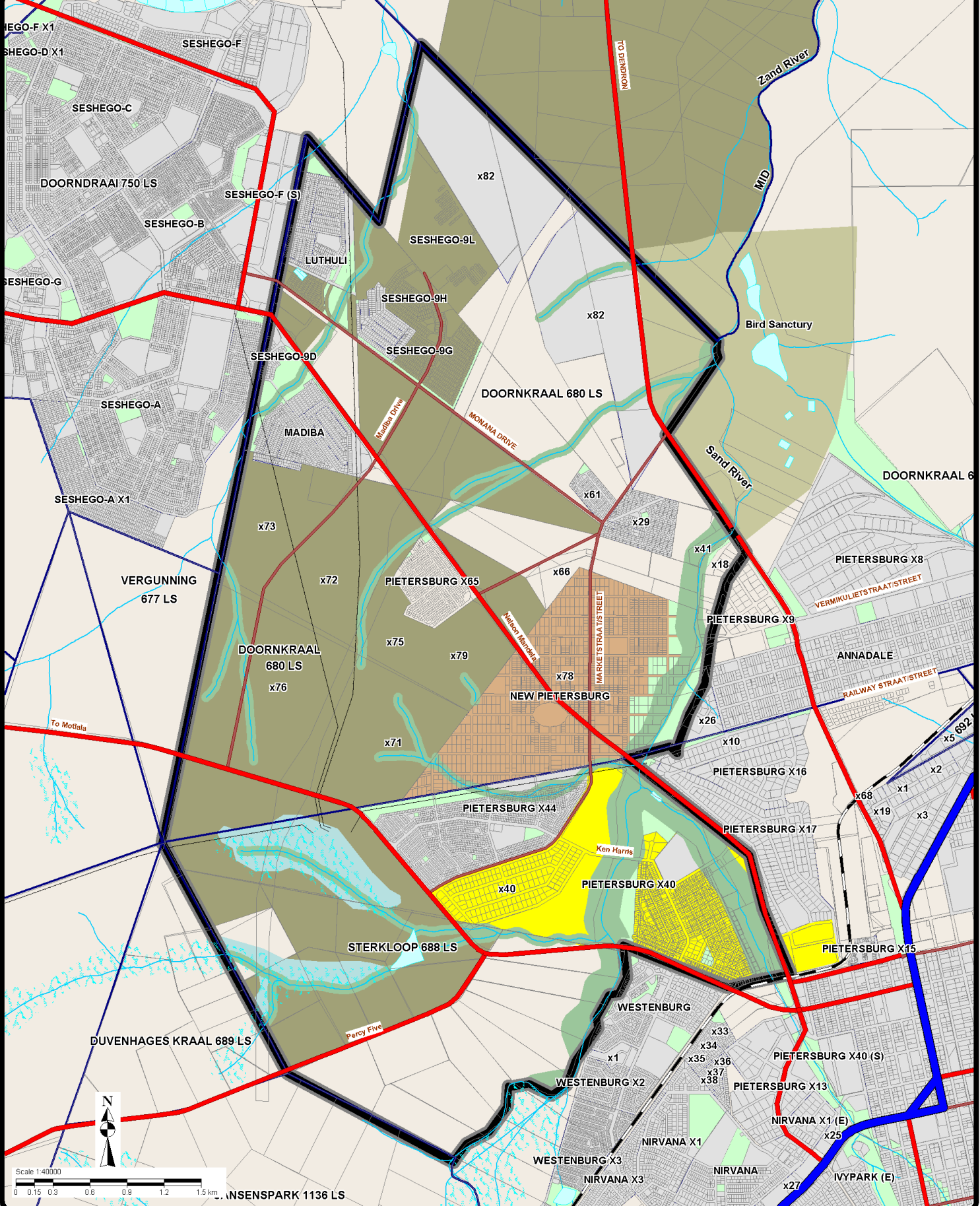




POLOKWANE LOCAL MUNICIPALITY (SDA 1) COMMUNITY FACILITIES

- SDA 1
- Malt Factory
- Educational
- Institutional
- Hospital
- Filling Station
- Bus / Taxi Terminus
- Reservoir
- Sewer
- Park / Public Open Space
- Rivers & Buffers
- Bird Sanctuary
- Main Roads
- Railway

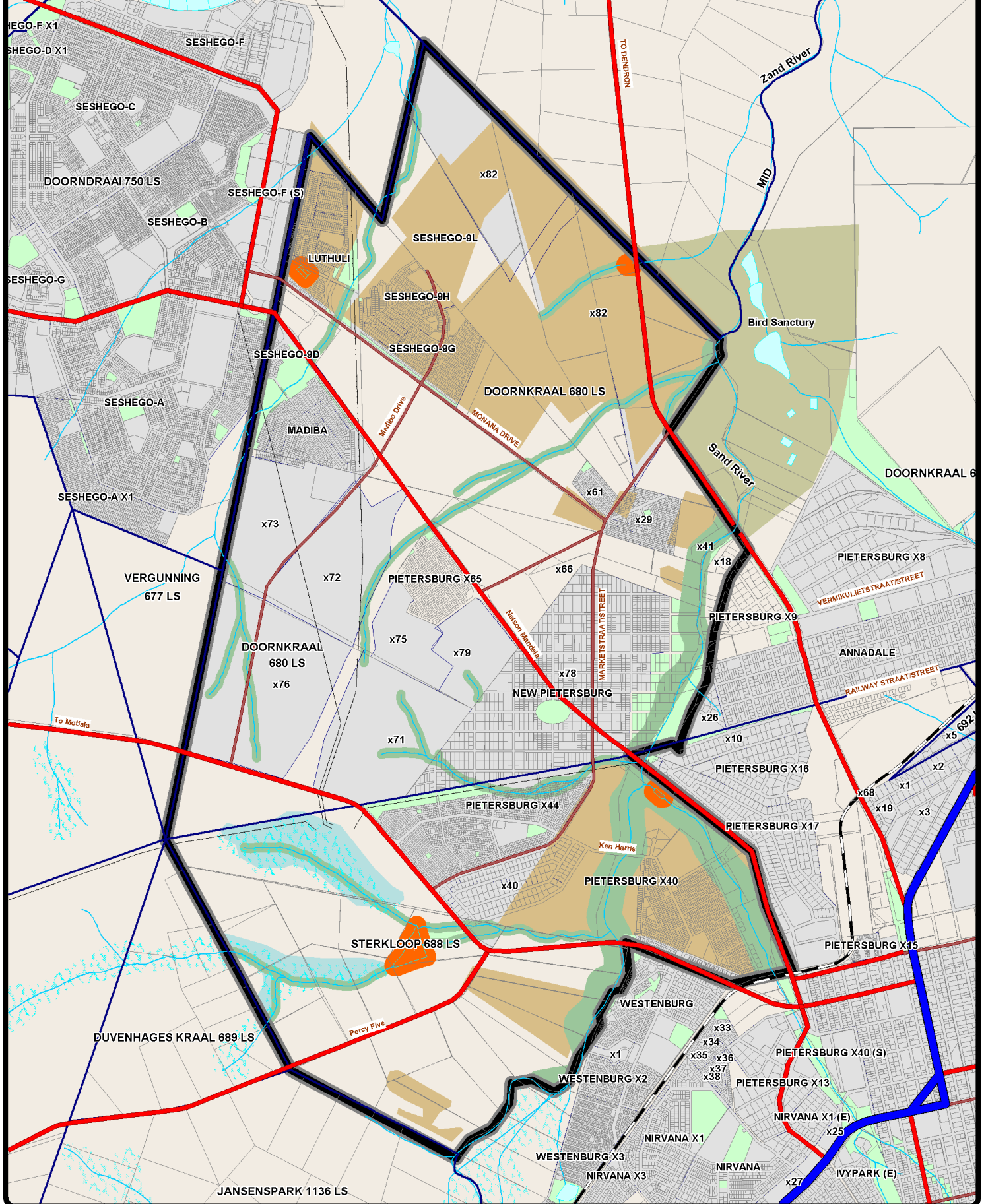




POLOKWANE LOCAL MUNICIPALITY (SDA 1) LAND OWNERSHIP

- SDA 1
- Polokwane Municipality (Farm Land)
- Polokwane Municipality (Townships)
- Polokwane Municipality (Other)

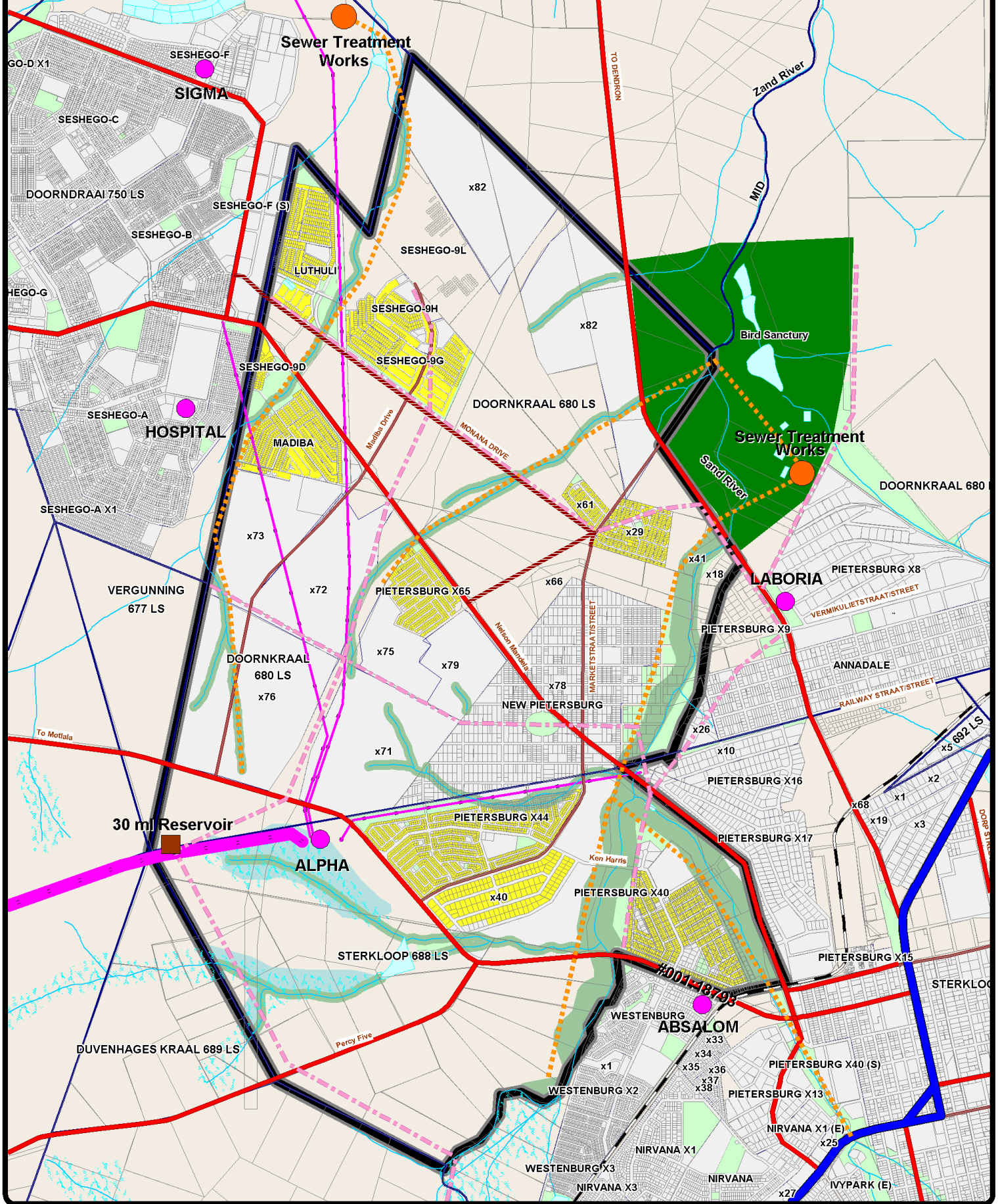




POLOKWANE LOCAL MUNICIPALITY (SDA 1) ENVIRONMENTAL CORRIDORS

- SDA 1
- Bird Sanctuary
- Bull Frog Habitat
- Sodic Areas / Erosion
- Parks / Open Space
- Old Fields / Cultivated Fields

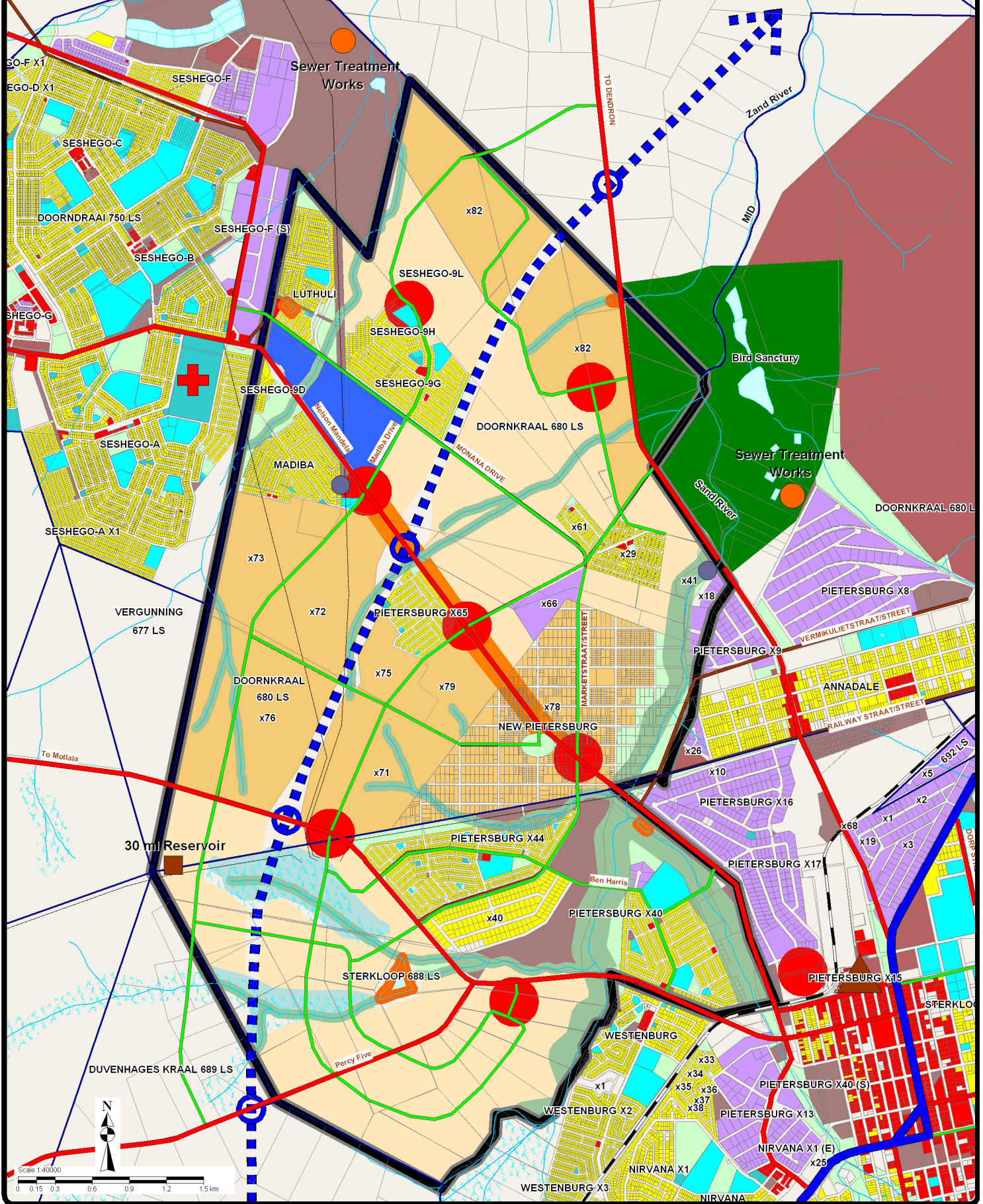




POLOKWANE LOCAL MUNICIPALITY (SDA 1) ENGINEERING SERVICES

- SDA 1
- Electrical Feeder Line
- Electrical Sub-stations
- Sewer Line
- Sewer Treatment Works
- Bulk Water Line
- Reservoir

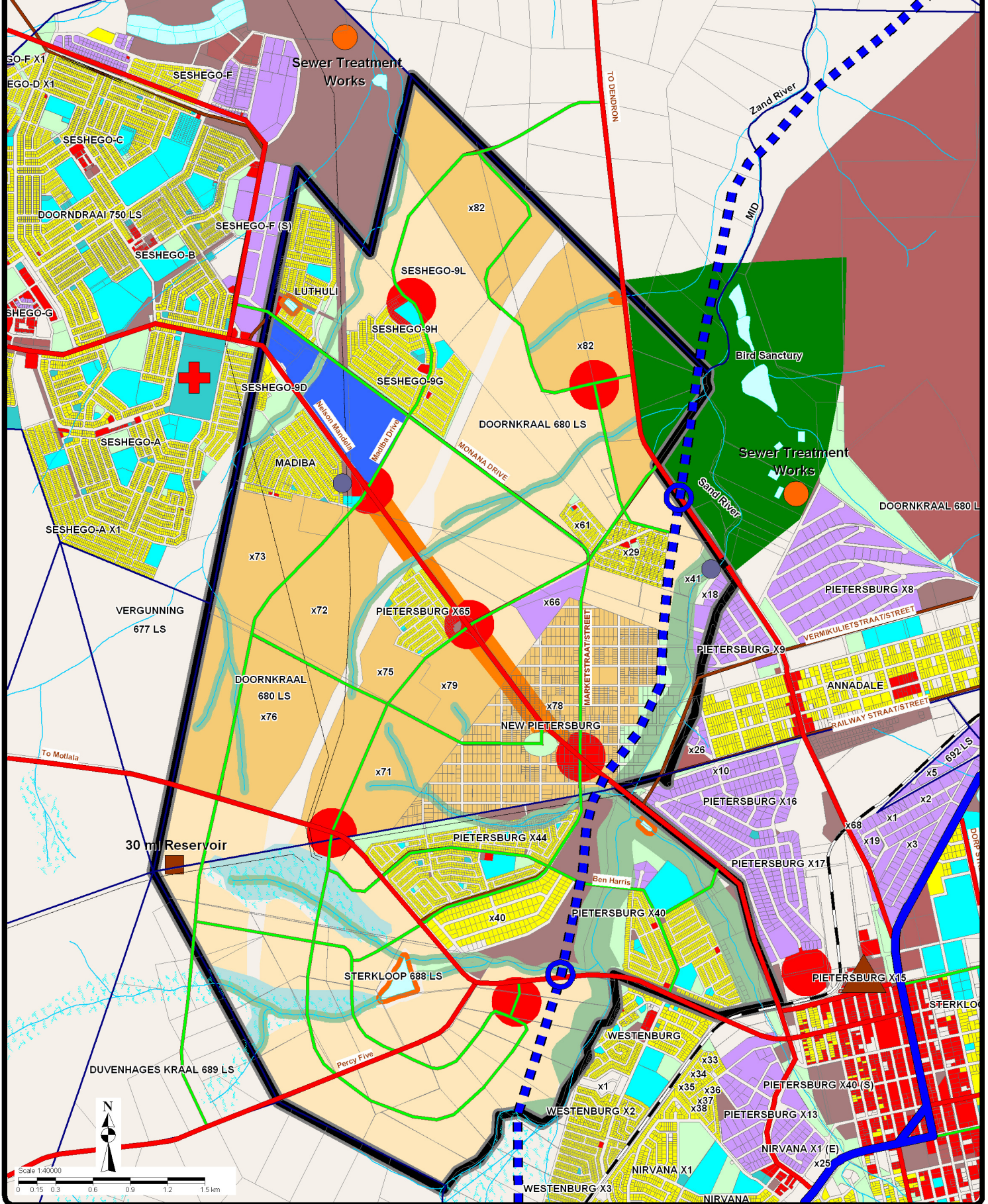




POLOKWANE LOCAL MUNICIPALITY (SDA 1) SPATIAL DEVELOPMENT FRAMEWORK

- | | | | |
|--|---|---|--|
| <ul style="list-style-type: none"> □ SDA 1 ■ Residential ■ Existing Townships (SDA 1) ■ Townships Approved (Under Construction) ■ High Density Residential ■ Land Available for Residential Purposes ■ Business ■ Multi Purpose Center ■ Educational ■ Proposed Commercial / Light Industrial / Retail | <ul style="list-style-type: none"> ■ Institutional ■ Hospital ■ Bus / Taxi Terminus ■ Filling Station ■ Reservoir ■ Sewer ■ Industrial ■ Special ■ Municipal | <ul style="list-style-type: none"> ■ Government ■ Park / Public Open Space ■ Rivers & Buffers ■ SAR ■ Bull Frog Habitat ■ Bird Sanctuary ■ Sodic Areas / Erosion | <ul style="list-style-type: none"> ■ National Distributor (First Order) ■ IFuture National Distributor (First Order) ■ Urban District Distributor (Second Order) ■ Urban Collector (Third Order) ■ Proposed Access ■ Railway |
|--|---|---|--|





POLOKWANE LOCAL MUNICIPALITY (SDA 1) SPATIAL DEVELOPMENT FRAMEWORK

- | | | | |
|--|---|---|--|
| <ul style="list-style-type: none"> □ SDA 1 ■ Residential ■ Existing Townships (SDA 1) ■ Townships Approved (Under Construction) ■ High Density Residential ■ Land Available for Residential Purposes ■ Business ■ Multi Purpose Center ■ Proposed Commercial / Light Industrial / Retail ■ Educational | <ul style="list-style-type: none"> ■ Institutional ■ Hospital ■ Bus / Taxi Terminus ■ Filling Station ■ Reservoir ■ Sewer ■ Industrial ■ Special ■ Municipal | <ul style="list-style-type: none"> ■ Government ■ Park / Public Open Space ■ Rivers & Buffers ■ SAR ■ Bull Frog Habitat ■ Sodic Areas / Erosion | <ul style="list-style-type: none"> ■ National Distributor (First Order) ■ Urban District Distributor (First Order) ■ Urban District Distributor (Second Order) ■ Urban Collector (Third Order) ■ Proposed Access ■ Railway |
|--|---|---|--|



